

A Systems Approach to Distinctive Impact
Protection Design Since 1945

Pro•Tek®

ENTRANCE

Matting Systems

Engineered and Manufactured
by the Pawling Corporation
www.pawling.com





Why Choose Pawling?

With over sixty years of experience, Pawling Corporation is a leading manufacturer of high-quality architectural products that will meet your material specifications as well as your design needs. We offer responsive, results-oriented design capabilities to satisfy any custom design requirement.

- Complete line of impact protection, entrance mats, athletic tile and parking products to protect your entire facility in any application
- Two manufacturing facilities totaling 360,000 square feet
- Broad line of exceptional products to protect facilities front to back, inside and outside
- Custom-designed fabrications and colors based on your needs



1 Rol-Dek® Series

Protecting your building from moisture and debris starts with Pawling's complete line of custom Pro-Tek® entrance mats—like our Rol-Dek® Series. You can achieve a sleek, architectural look with a quality product that rolls up quickly for easy maintenance and cleaning. In three popular styles, the Rol-Dek® Series provides protection in moderate to heavy traffic areas and may be used in both recessed and surface applications.

All Rol-Dek® entrance mats feature:

- Easy cleaning, rolls back 180°
- Six different tread insert options create multiple combinations of colors and functions
- Custom fabrication, including angles, arcs/radii, and cutouts
- Continuous resilient vinyl cushion reduces clatter
- Optional square nosing for on-site trimming
- Optional beveled nosing for surface applications
- Rolling load test to 350 lbs./wheel
- EM-650/EM-800 fabricated from at least 70% recycled aluminum

CONTENTS

1 Rol-Dek® Series	3
2 Drain-Well® Series	4
3 Metal Gratings	5
4 The Harmony Series	6
5 Heavy-Duty Rubber Entrance Mats	7
6 Vinyl Entrance Mats	8
7 Heavy-Duty Carpets	9
8 Vinyl Backed Mats	10
Rol-Dek® and Drain-Well® Tread Insert Color Selection Guide	11
Frame Selector Charts	11
Color Selection Guide	Bk Cover



EM-500



EM-650

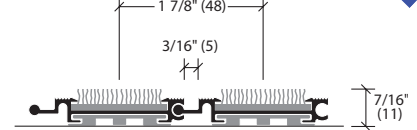
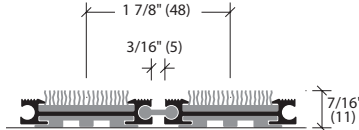
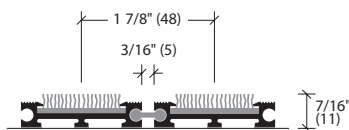


EM-800

Product Code	EM-500
Dimensions	7/16"
Rail Material	Vinyl
Rail Color/Finishes	Black
Construction	Perforated vinyl hinge
Roll Back Capability	Yes
Deep Pit Availability	No
Rolling Load/wheel	350 lbs.
Traffic	Moderate Interior
Maximum Weight/Sq. Ft. (varies by insert)	1.9 lbs.

Product Code	EM-650
Dimensions	7/16"
Rail Material	Aluminum
Rail Color/Finishes	Mill Finish, Clear Anodized, Bronze Anodized, Black Anodized
Construction	Perforated vinyl hinge
Roll Back Capability	Yes
Deep Pit Availability	No
Rolling Load/wheel	350 lbs.
Traffic	Heavy Interior or Covered Exterior
Maximum Weight/Sq. Ft. (varies by insert)	2.8 lbs.

Product Code	EM-800
Dimensions	7/16"
Rail Material	Aluminum
Rail Color/Finishes	Mill Finish, Clear Anodized, Bronze Anodized, Black Anodized
Construction	Solid or perforated aluminum hinge
Roll Back Capability	Yes
Deep Pit Availability	No
Rolling Load/wheel	350 lbs.
Traffic	Heavy Interior or Exterior
Maximum Weight/Sq. Ft. (varies by insert)	3.0 lbs.



2 Drain-Well® Series

Make a statement at your entrance with our heavy-duty Drain-Well® entrance mats. With three options to choose from, you're sure to find the one that meets your needs. Trapping grime is easier with our Drain-Well® Series—moisture and dirt scrapes off shoes and gets trapped beneath the surface. Available in four aluminum finishes, our Drain-Well® gratings will give you the aesthetic look you want with the entrance protection your building needs.

All Drain-Well® entrance mats feature:

- Six different tread insert options for multiple combinations of colors and functions
- Custom fabrications for specific needs such as arcs, patterns, etc.
- Continuous resilient vinyl cushion reduces clatter
- Standard level bed frame systems (RG-500/600 feature optional deep pit frame systems)
- Fabricated from at least 70% recycled aluminum

RG-250		RG-300		RG-400	
Product Code	RG-250	Product Code	RG-300	Product Code	RG-400
Dimensions	3/4"	Dimensions	1-1/2"	Dimensions	1-1/2"
Rail Color/Finishes	Mill Finish, Clear Anodized, Bronze Anodized, Black Anodized	Rail Color/Finishes	Mill Finish, Clear Anodized, Bronze Anodized, Black Anodized	Rail Color/Finishes	Mill Finish, Clear Anodized, Bronze Anodized, Black Anodized
Rail Material	Aluminum	Rail Material	Aluminum	Rail Material	Aluminum
Construction	Perforated vinyl hinge	Construction	Box Beam rails fastened to support rails, spaced 12" on center with vibration-proof fasteners	Construction	Box Beam rails fastened to support rails, spaced 6" on center with vibration-proof fasteners
Roll Back Capability	Yes	Roll Back Capability	No	Roll Back Capability	No
Deep Pit Availability	No	Deep Pit Availability	Yes (RG-500)	Deep Pit Availability	Yes (RG-600)
Rolling Load/wheel	1,000 lbs.	Rolling Load/wheel	350 lbs.	Rolling Load/wheel	400 lbs.
Traffic	Heavy Interior or Exterior	Traffic	Heavy Interior or Exterior	Traffic	Heavy Interior or Exterior
Maximum Weight/Sq. Ft. (varies by insert)	4.6 lbs.	Maximum Weight/Sq. Ft. (varies by insert)	3.5 lbs.	Maximum Weight/Sq. Ft. (varies by insert)	3.7 lbs.

--	--	--



3 Metal Gratings

Our Pro•Tek® entrance gratings combine the beauty of metal with the exceptional strength of grid systems that are designed to stand up to the toughest traffic. Use in conjunction with our Maxi-Tuft Long Wear Carpet Matting to brush and remove moisture while providing a dramatic look for your entryway. With their smooth rollover capability, metal gratings such as our RG-200 are also excellent for applications involving wheelchairs or gurneys. And our metal gratings are well suited for both interior and exterior applications.

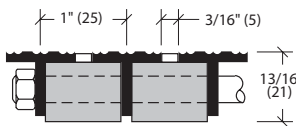
All styles feature:

- Clean architectural lines for an elegant, high-tech appearance
- Safe, heel-proof design
- All-weather durability and easy cleaning

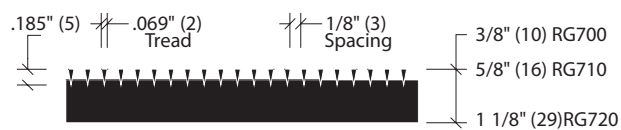


Product Code	RG-200
Dimensions	13/16"
Rail Color/Finishes	Mill Aluminum, Satin Finish Bronze
Rail Material	Aluminum, Bronze
Construction	T-gratings fastened by steel tie rods and nylon insert lock nuts
Rolling Load/wheel	350 lbs.
Traffic	Heavy Interior or Exterior
Weight/Sq. Ft.	Aluminum: 2.6 lbs. Bronze: 7.25 lbs.

Aluminum only is recyclable



Product Code	RG-700/710/720
Dimensions	RG-700 3/8" RG-710 5/8" RG-720 1-1/8"
Rail Finish/Material	Satin Stainless Steel
Construction	Welded assembly
Rolling Load/wheel	500 lbs.
Traffic	Heavy Interior or Exterior
Weight/Sq. Ft.	RG-700 3.0 lbs. RG-710 4.0 lbs. RG-720 6.0 lbs.



Uses Recycled Materials

4 The Harmony Series

Pawling's Harmony Series is a fully-integrated system developed to combat maintenance problems, extend the life and appearance of interior floors and prevent slips in entrance areas. With a choice of plain tile, carpet or a combination of both, the Harmony Series provides an option for every application. The uniquely constructed modular tiles of the EM-100 provide exceptional dirt scraping and moisture retention with the ease of interlocking installation. EM-110 combines that same ease of installation, plus extra cleaning capability with the brushing action of tufted cut-pile nylon carpet strips. And the modular design of the EM-120 allows for solid carpet sections intermixed with the tile, yet is attractive and functional enough to stand on its own. With three designer styles and thirteen carpet choices, you're sure to find the right look for your décor. These long-lasting, attractive and versatile pieces will provide slip resistance and effective dirt removal for years to come.

EM-100		EM-110		EM-120	
Product Code	EM-100	Product Code	EM-110	Product Code	EM-120
Dimensions	7.87" x 7.87" x 1/2"	Dimensions	7.87" x 7.87" x 1/2"	Dimensions	18" x 18" x 3/8"
Material	Thermal Plastic w/ UV Inhibitors	Material	Thermal Plastic w/ Nylon Carpet	Material	Tufted 6.6 Nylon
Color	Charcoal	Color	Charcoal Tile with 13 carpet colors	Color	1 design; 13 colors
Construction	Highly durable independent resilient scrapers	Construction	Nylon carpet strips bonded to tiles	Construction	Proprietary high-twist open yarn tufted to PVC-free backing
Roll Back Capability	Yes	Roll Back Capability	Yes	Roll Back Capability	No
Installation	Loose Lay—Interlocking	Installation	Loose Lay—Interlocking	Installation	Glue Down
Traffic	Moderate to Heavy Interior and Exterior	Traffic	Moderate to Heavy Interior and Exterior	Traffic	Moderate to Heavy Interior
Weight/Sq. Ft.	.74 lbs.	Weight/Sq. Ft.	1.27 lbs.	Weight/Sq. Ft.	1.1 lbs.

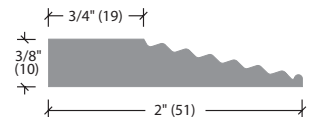
5 Heavy-Duty Rubber Entrance Mats

Pawling’s Hi-Rib® rubber entrance mats feature deep groove corrugations to trap debris and minimize soil tracked into your building. With a flexible “Wiper Blade” design, Hi-Rib mats remove debris efficiently from shoes. Our premium rubber compound remains flexible in sub-freezing conditions, and maintains outstanding slip resistance in wet and dry conditions. If it’s tough “brush and dry” entrance protection you need, consider our Dura-Tile—100% recycled rubberized tire strips buffed to a chenille finish and bonded to a durable fiberglass backing. The parquet-style installation provides a versatile, non-directional traffic surface.

Our heavy-duty rubber entrance mats feature:

- Excellent coverage for both interior and exterior high-traffic areas
- Installation options ranging from glue-down to loose laid to interlocking tiles
- Slip resistance that exceeds ADA recommendations

EMB-203		EM-205		LT-50/LT-51	
					
Molded Hi-Rib®		Hi-Rib® Tiles		Dura-Tile	
Product Code	EMS-203	Product Code	EM-205	Product Code	LT-50/ LT-51
Dimensions	6' x 3' x 7/16"	Dimensions	12' x 12' x 1/2"	Dimensions	LT-50 12' x 12" tiles LT-51 12' x 25' rolls
Material	Premium Rubber Compound	Material	Premium Rubber Compound	Material	100% Recycled Rubber
Color	Black	Color	Black	Color	Muted Gray Earthtone
Construction	Molded mats with precision molded beveled (EMB-203)	Construction	Interlocking modular tiles	Construction	Rugged tire cord bonded to fiberglass backing
Installation	Loose Lay	Installation	Loose Lay Interlocking	Installation	Glue Down
Static Coefficient of Friction Ratio (ASTM D-2047)	Dry 0.97 Wet 1.02	Static Coefficient of Friction Ratio (ASTM D-2047)	Dry 0.97 Wet 1.02	Static Coefficient of Friction Ratio (ASTM D-2047)	Dry 0.67 Wet 0.89
Flammability	Passes FF-1-70 and FF-2-70	Flammability	Passes FF-1-70 and FF-2-70	Flammability	Passes FF-1-70
Weight	36 lbs./Ea.	Weight	2.4 lbs./Ea.	Weight	2.4 lbs./Ea.



6 Vinyl Entrance Mats

Pawling's Pro•Tek® vinyl entrance mats combine performance and style to suit any entry requirements. Our mats aggressively scrape and trap soil and debris. The LM-100 and LM-400 both feature safe, heel-proof drainage holes for a comfortable and slip-resistant entry surface. In addition our modular vinyl tiles are made from recycled PVC material, adding to your LEED certification points. You can also make an impression with your company logo on a Parco-Link vinyl entrance mat. These mats feature flexible wiper blades to scrape and squeegee shoes clean and exceed the ADA recommended standards for slip resistance in wet and dry areas (0.67 Dry and 0.89 Wet per ASTM D-2047).

Pawling's Vinyl Entrance Mats feature:

- Variety of colors to match any decor
- Superior slip resistance
- UV stabilizers to resist fading



Loose Lay Interlocking

Product Code	LM-100
Dimensions	7/16" thick (custom l & w)
Material	Flexible Vinyl
Colors	12 (Custom Logos Available)
Construction	Flexible vinyl links connected by 12 gauge spring steel wires. Square and beveled nosings available
Optional	Open Weave (LM-400)
Traffic	Moderate to Heavy Interior or Exterior
Installation	Loose Lay
Flammability	Class 1 (ASTM E-648)
Weight/Sq. Ft.	LM-100 2.3 lbs. LM-400 1.8 lbs.



7 Heavy-Duty Carpets

Bring an upscale appearance to high-abuse or high-traffic areas with Pawling's Pro•Tek® Heavy-Duty Carpets. With a durable, rugged blend of heather fiber that provides excellent resistance to fading and UV light degradation, our heavy-duty carpets are perfect for interior and exterior applications. High traffic locations such as fitness clubs, country clubs, hotels and other lobby entrances will benefit from the non-woven needle-punched construction that makes Pawling's carpet more durable than conventional commercial carpet. Our Berber and Protector carpet lines offer hot-melt beveled edging or attached vinyl beveled nosing for surface applications.

All of Pawling's Berber, Protector and Jaguar carpets feature:

- A wide variety of colors to complement any décor
- Custom sizing
- Coarse fibers that effectively trap soil and debris
- Easy to clean durability
- Fiberbond construction that allows for factory or on-site custom cutting without unraveling
- Non-woven needle-punch construction
- DOC FF-1-70 & FF-2-70 flammability ratings
- Nonskid composite rubber backing

EM-20/EM-22		EM-40		EM-50	
Product Code	EM-20 Berber Carpet EM-22 Berber Carpet Tiles	Product Code	EM-40 Protector	Product Code	EM-50 Jaguar
Dimensions	EM-20 / 6' 6" or 13' 2" W x 1/2" H x approx. 50' roll EM-22 / 19-11/16" x 19-11/16" x 1/2" H; 10 tiles per case	Dimensions	EM-40 6' 6" or 13' 2" W x 1/2" H x 50' roll	Dimensions	EM-50 6' 6" or 13' 2" W x 3/8" H x 68' 11" roll
Pile Weight	52 oz./Sq. Yd.	Pile Weight	52 oz./Sq. Yd.	Pile Weight	38 oz./Sq. Yd.
Fiber Type	Polypropylene blend of 17-240 denier per filament fibers; solution dyed; UV stable	Fiber Type	Polypropylene blend of 17-240 denier per filament fibers; solution dyed; UV stable	Fiber Type	Polypropylene blend of 17-160 denier per filament fibers; solution dyed; UV stable
Pattern	Nubby Hobnail	Pattern	Ribbed	Pattern	Double Rib
Colors	EM-20 /11 EM-22 /5	Colors	4	Colors	2
Installation	EM-20 /Loose Lay or Glue Down EM-22 /Glue Down	Installation	Loose Lay or Glue Down	Installation	Loose Lay or Glue Down
Traffic	Moderate to Heavy Interior/Exterior	Traffic	Moderate to High Interior/Exterior	Traffic	Moderate Interior/Exterior
Static Coefficient of Friction Ratio	Dry 0.58 Wet 0.61 ASTM C-1028-96	Static Coefficient of Friction Ratio	Dry 0.58 Wet 0.62 ASTM C-1028-96	Static Coefficient of Friction Ratio	Dry 0.53 Wet 0.67 ASTM D2047-82
Weight/sq.ft.	.75 lbs.	Weight/sq.ft.	.75 lbs.	Weight/sq.ft.	.54 lbs.



8 Vinyl Backed Mats

Pawling's Pro-Tek® line of Maxi-Tuft Long Wear Carpet and Natural Cocoa Mats provides densely-tufted fiber construction for exceptional brushing and drying performance. The unique tetra-lobal shaped fibers of Maxi-Tuft (pile weight 26.5 oz./square yard) collect three times the dirt of ordinary standard nylon type carpets. Used in combination with our Rol-Dek®, Drain-Well® and Metal Grating Series entrance mats, Maxi-Tuft will provide the best combination of style and performance to keep your entryways beautiful for years to come. If sand, dirt and moisture are the problems, turn to our EM-300 series of Natural Cocoa Mats, with fibers that aggressively remove soil from shoes like a brush.

Pro-Tek® Vinyl Backed Mats include features such as:

- Custom sizing and a variety of thicknesses
- Long-wearing coarse fibers that effectively minimize and prevent the spread of dirt beyond your entryway
- Standard colors that won't show wear and tear
- Choice of loose lay or glue down installation and optional bevel nosing for surface applications



Product Code	EM-701
Height	3/8"
Dimensions (approximate)	6' 7" x 82'
Fiber Type	100% Polyamide Nylon: 80 and 40 Detex, Blend tetra-lobal fibers
Colors	Black, Cocoa, Charcoal
Construction	Tufted/cut pile
Traffic	High Interior
Static Coefficient of Friction Ratio	Dry 0.87 Wet 0.87 ASTM D-2047
Flammability	DOC FF-1-70; Class 1
Weight	.65 lbs./Sq. Ft.



Product Code	EM-300/301/302
Height	EM-300 5/8" / EM-301 3/4" / EM-302 1"
Dimensions (approximate)	EM-300 Natural 78" x 39' 4" roll Brown/Charcoal 78" x 41' 9" roll EM-301/302 Natural only 78" x 39' 4" roll
Fiber Type	Natural Cocoa fiber yarn (coir)
Colors	Natural (EM-300 also in Brown or Charcoal)
Construction	Indian Cocoa fiber bonded to solid vinyl backing
Traffic	Moderate to High Interior
Static Coefficient of Friction Ratio	Dry 0.75 Wet 1.09 ASTM D-2047
Flammability	DOC FF-1-70 & FF-2-70
Weight	EM-300 1.75 lbs./Sq. Ft. EM-301 2.00 lbs./Sq. Ft. EM-302 2.50 lbs./Sq. Ft.



Uses Recycled Materials

Rol-Dek® and Drain-Well® Tread Insert Color Selection Guide

Rigid-Back Nylon Carpet (SNC)

38 CHARCOAL	518 LANCASTER GRAY
510 ORCHID	519 NEAR BLACK
511 PLUM BEIGE	591 AFRICAN VIOLET
512 DESERT PLUM	592 CHROME
513 TERRA CLAY	593 RAF BLUE
514 BRITISH GREEN	594 SUGAR PLUM
515 HARBOR BROWN	595 TRUFFLE
516 MUSHROOM	596 WINTER SLATE
517 CRAYON BLUE	

Heated interior absorption applications
• Effective moisture/dust control in light traffic areas

Bristle Filament (BF)

4 BROWN
519 NEAR BLACK
18 SAND
38 CHARCOAL
344 TEAL

Exterior or interior scraping/absorption applications
• Aggressive brush action for maximum cleaning
• Superior indoor/outdoor performance

Rigid Corrugated Vinyl (RCV)

1 BLACK
7 TERRA COTTA
289 PEARL GRAY
374 ASH BROWN
385 BEIGE DESERT

Exterior or interior scraping applications
• Low maintenance/-excellent scraping
• Moderate rolling loads

Maxi-Tuft Long Wear (MLW)

1 BLACK
4 BROWN
8 BLUE
16 COCOA
38 CHARCOAL
157 HUNTER GREEN
546 RED/BROWN

Heated interior scraing/absorption applications
• Excellent crush/abrasion resistance
• Three times the durability of standard nylon carpet
• Available in full rolls for matching custom-sized mats (Model EM-701, page 8)

Aluminum Abrasive (AA)

1 BLACK
7 TERRA COTTA
5 GRAY
4 BROWN

Rol-Dek® and Drain-Well® Tread Insert Color Selection Guide Exterior or interior scraping application
• Carborundum chip surface provides exceptional all weather traction for pedestrian traffic
• Not recommended for heavy, pivoting rolling loads

Corrugated Aluminum (CA)

475 MILL FINISH ALUMINUM

Exterior or interior scraping applications
• Most durable
• Requires least maintenance
• Only insert recommended to accommodate "pivoting" rolling loads
• Recommended for supermarket and wheeled cart applications

All tread inserts (except Bristle Filament) pass Critical Radiant Flux Flammability test (ASTM E-648/NFPA-253: Class 1). Bristle Filament inserts pass Self Extinguishing Flammability test (FF1-70 & FF2-70). All tread inserts exceed ADA Accessibility Guideline A4.5.1 for recommended static coefficient of friction for accessible routes in wet and dry conditions.

*Frame Styles shown may be used with any of our 3/8"-5/8" mats, including Rol-Dek®, Harmony Dura-Tile, Hi-Rib®, Link Mats, Vinyl Backed Mats, and Carpet.

Frame Selector Charts

	MRF-1002*	MRF-1005*	SSF-125*	BSF-225*
APPLICATION	Recessed Level Bed	Recessed Level Bed	Recessed Level Bed	Surface Level Bed
ALUMINUM FINISHES	Mill, Clear Anodized, Bronze Anodized, Black Anodized	Solid Architectural Bronze	Mill, Clear Anodized, Bronze Anodized, Black Anodized	Mill, Clear Anodized, Bronze Anodized, Black Anodized Abrasive Strips available in Black, Brown, Gray, Terra Cotta
FRAME PROFILE				

	RG-250		RG-300/400	
	RGF-250	SSF-250	RGF-300	RGF-500/600
APPLICATION	Recessed Level Bed	Recessed Level Bed	Recessed Level Bed	Recessed Deep pit
ALUMINUM FINISHES	Mill, Clear Anodized, Bronze Anodized, Black Anodized	Mill, Clear Anodized, Bronze Anodized, Black Anodized	Mill, Clear Anodized, Bronze Anodized, Black Anodized	Mill, Clear Anodized, Bronze Anodized, Black Anodized
FRAME PROFILE				

	RGF-200	RGFB-200	RGFS-710/720	RGFA-700/710/720
APPLICATION	Recessed Level Bed	Recessed Level Bed	Recessed Level Bed	Recessed Level Bed
FINISHES	Mill Finish Aluminum	Solid Architectural Bronze	Mill Finish Aluminum	Mill Finish Stainless Steel
FRAME PROFILE				

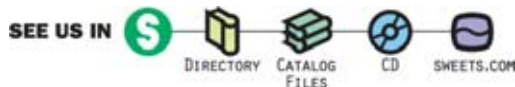


Color Selection Guide (continued)

EM-110 & EM-120 Barrier Reef Design	Street Smart Design	EM-20/22 Berber	EM-40 Protector	LM-100/400 Parco-Link	EM-701 Maxi-Tuft
748 NUTMEG	748 NUTMEG	66 BEIGE	66 BEIGE	1 BLACK	1 BLACK
749 CHARCOAL	749 CHARCOAL	176 TAUPE**	17 NATURAL	3 TAN	38 CHARCOAL
750 SAPPHIRE	750 SAPPHIRE	17 NATURAL**	71 SLATE GRAY	4 BROWN	16 COCOA
751 MARINE	751 MARINE	441 ZINC	38 CHARCOAL	5 GRAY	EM-300/301/302 Cocoa Mat
752 SLATE	752 SLATE	71 SLATE GRAY	122 BLUE GRAY	7 TERRA COTTA	17 NATURAL
753 CLOVER	753 CLOVER	38 CHARCOAL	EM-40 Jaguar	8 BLUE	4 BROWN
754 KHAKI	754 KHAKI	122 BLUE GRAY	38 CHARCOAL	10 WHITE	38 CHARCOAL
755 GRANITE	755 GRANITE	260 MEDIUM BLUE**	57 CHOCOLATE	11 RED	
756 TAUPE	756 TAUPE	261 MEDIUM GREEN**		12 YELLOW	
757 RAISIN	757 RAISIN	360 MIDNIGHT BLUE**		73 MAROON	
758 GARNET	758 GARNET	1 BLACK**		206 LIGHT BLUE	
				261 MEDIUM GREEN	

** not available for EM-22

Due to limitation of printing, colors are representational only and may vary. Please request a sample when choosing final colors.



Pawling Catalogs in Sweets

Pro•Tek® Impact Protection Systems: 10 26 00/PAW, General Building
 Pro•Tek® Athletic Flooring: 09 65 66/PAW, General Building
 Pro•Tek® Entrance Matting & Gratings: 12 48 13/PAW, General Building
 Pawling Corporation products may also be found on www.arcat.com,
www.sweets.com and www.4specs.com

©2009 The Pawling Corporation
 Pawling Corporation reserves the right to discontinue or modify a design without prior notice.



For detailed technical drawings and information on all Pawling products including CADs and specs, visit www.pawling.com

Corporate Information

Our Vision & Warranty
 Pawling Corporation Architectural Products Division pledges to employ all its resources to focus on customer satisfaction and continual improvement. We strive to provide superior quality products and services that meet or exceed your expectations. We want to be your first choice for a wide variety of architectural products. Pawling stands behind every sale with our Limited Lifetime Warranty. We warrant all standard catalog products against defect in materials and workmanship when installed in conformance with the Pawling Corporation Installation Instructions.

Pawling Corporation Architectural Products

32 Nelson Hill Road
 P.O. Box 200
 Wassaic, NY 12592
 Tel: (800) 431-3456
 or (845) 373-9300
 Fax: (800) 377-4403
 or (845) 373-7827
www.pawling.com

Pro•Tek®
 Entrance Matting
 Systems